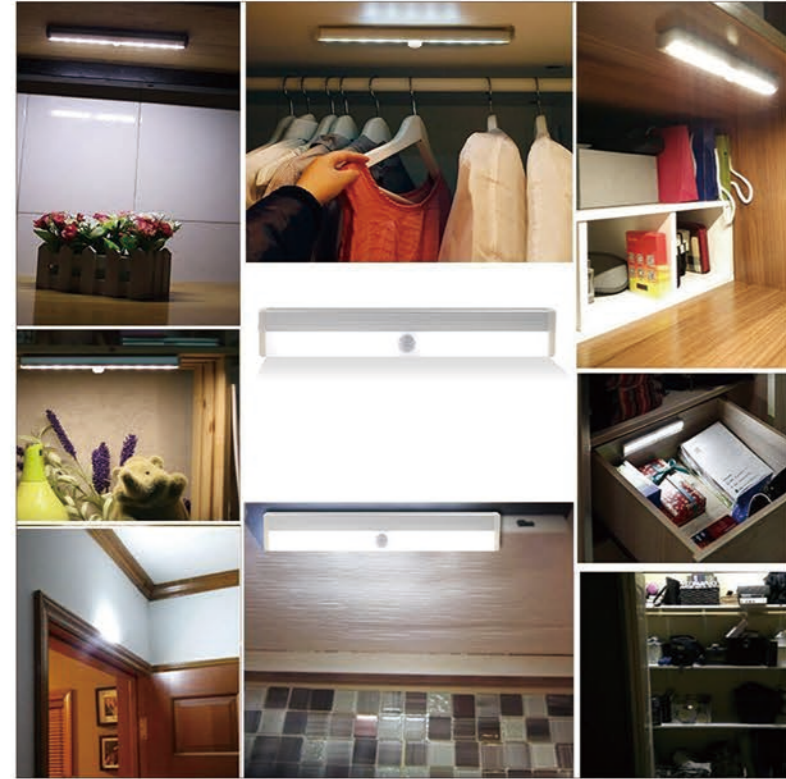


SHENZHEN LIGHT FEEL OPTOELECTRONICS CO.,LTD



motion-sensor lights USB rechargeable cabinet light



Build in battery

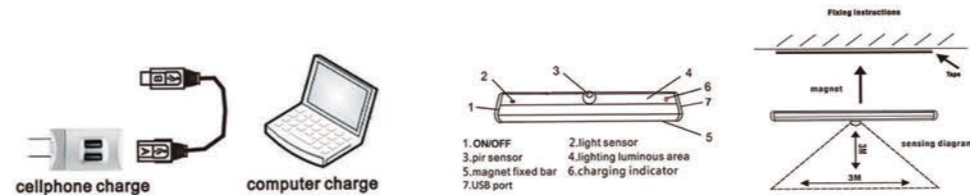
Rechargeable

Product specification:

1. Induction: human body infrared induction
2. Induction control: built-in light sensors (LSR)
3. Induction distance: within 3 to 5 meters
4. Induction Angle: 120 degrees or less
5. The LED life: 80000 hours
6. LED power: 0.8 W
7. The light color: white/warm white (optional)
8. Working current: 120 mA
9. Working voltage: 3-6 v
10. The battery capacity: 500 mAh
11. Delay time: 15 seconds
12. Operating temperature: - 10 ~ 50 °C
13. Product dimensions: length 195 mm X width 32 mm X 18 mm thick
14. Weight: 130 g

Product Features:

1. PIR sensor automatic induction: It can detect the movement of people. The leds lights turn on when people enter into the detecting area. And the lights turn off within a delay time about 15s when people leave.
2. Power supply: USB lithium batteries, rechargeable
3. Warm prompt: infrared sensor works best in a dark place. The leds lights will not turn on even if they receive the movement of human body when the light sensor detects the daylight or bright light.



Product Description:

This is a kind of automatic induction products with PIR sensor which can detect the movement of people. It is easy to carry or storage, safety, energy saving and convenient to decor in the cabinet, wardrobe, corridor, car trunk and so on.

Installation process:



Build-in Magnet, Stap on Any Metal Surface

With 3M Double-Sided Tape Peel and Stick

Applications:

